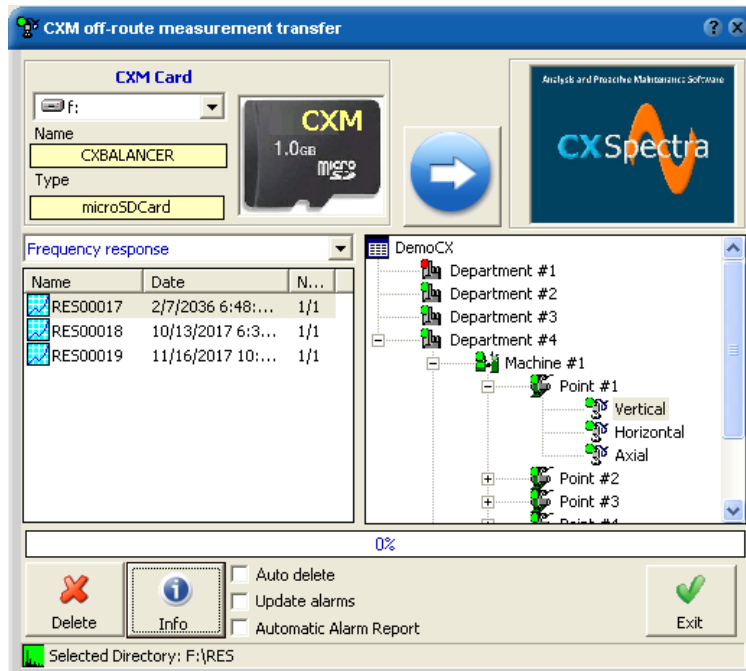


CXSpectra

Showing Frequency Response plots

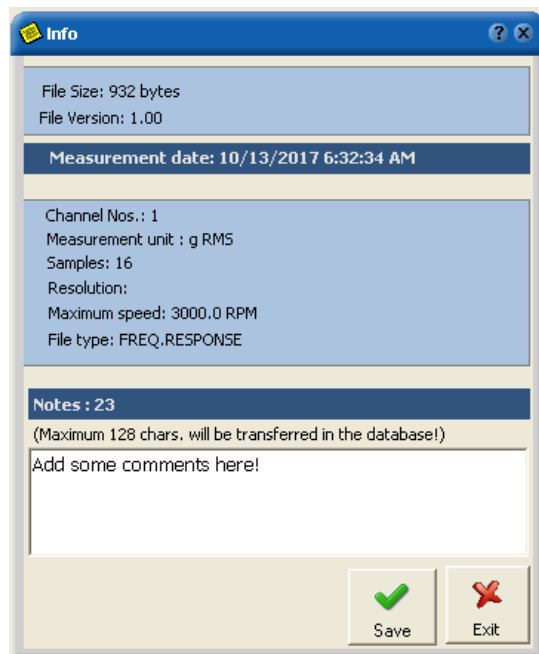
1. Downloading the “Frequency response” files

From Main Menu select *Transfer* → *Offroute* → *From Instrument*.



From the right combo-box select the type of measurement to be “Frequency response”.

From the left list, just select the file to be transferred.



From the right list select the destination (must be a “Direction”). Now, the “Transfer” button will be enabled.

Just click onto the “Transfer” button to proceed. Similarly, you may transfer many “Frequency response” files.

NOTE:

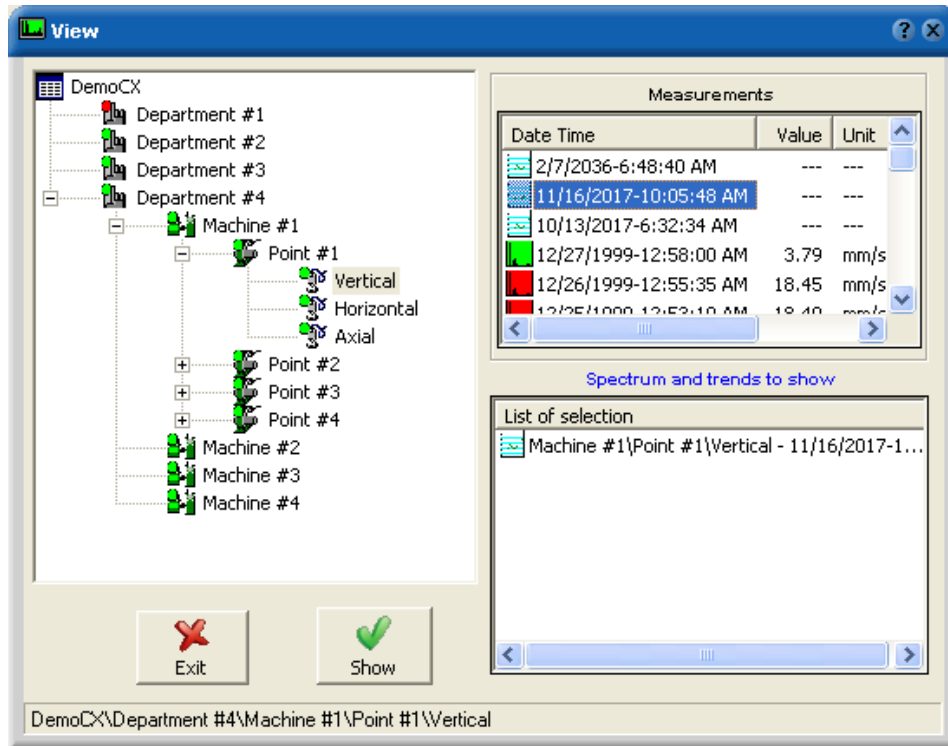
Before transferring a “Frequency response” file, you can check the file and add some comments. Just select the file and click onto the “Info” button.

If comments are added, press “Save” before closing the “Info” window.

(“Frequency response” files are located onto the instrument SD Card in the “RES” folder and having a “.cxr” extension.)

2. Showing the “Frequency Response” files

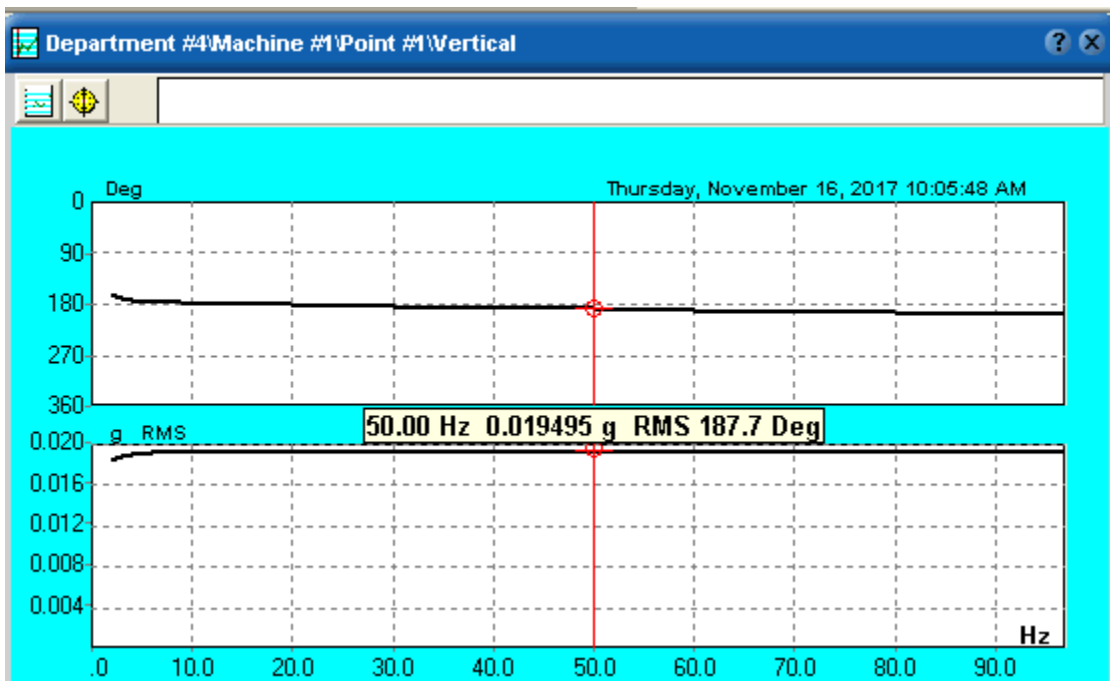
These files can be visualized only in the *View*→*Selection* menu



Select the “*Direction*” and, into the upper-right list, the “*Frequency Response*” files (if exist) will appear with a small light-blue icon.

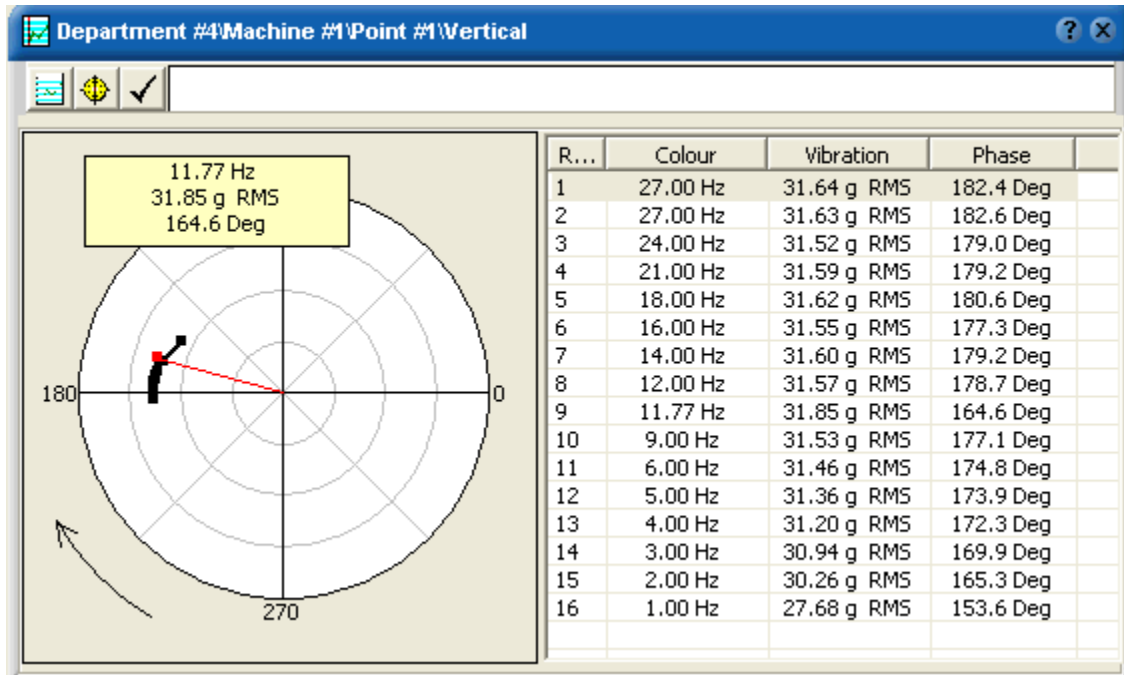
Just select and drag-drop to the lower-right list any item. In our case, you can drag-drop one or more “*Frequency response*” items.

Click the “*Show*” button to visualize them.



A plot cursor is also available (see the picture above).

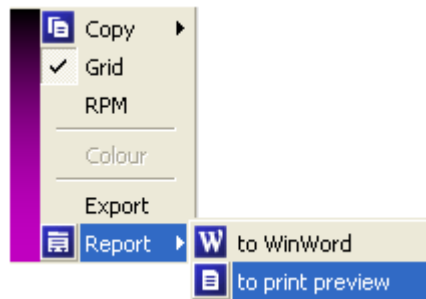
The “*Frequency response*” plot is also available in Nyquist format. Just click on the second button from the plot toolbar.



The red vector will move automatically onto the correct position, by clicking any item onto the right list.

Press the first button from the toolbar to return to the initial plot.

In both plots a pop-up menu is available. Just click-right into the plot area and the popup menu will appear:



Using this menu you can:

- ✓ Copy the plot in the clipboard or in a MS Word document.
- ✓ Show/hide the grid
- ✓ Change the frequency unit (RPM or Hz)
- ✓ Export the plot into a transfer file
- ✓ Create a report in a “*Print Preview*” window. From here you can print or transfer the report contents in a MS Word document.
- ✓ Transfer the report contents in a MS Word document.

Documentation Feedback

Any suggestions and comments for improving this Application Notes should be e-mailed at mainttech@live.se

MaintTech Sweden uses feedback for continuous improvement of our documentation and for future **MaintTech** products. We request comments be specific and include the product name and version. We cannot provide personal responses to every message received, but please be assured that all feedback will be given careful consideration for future improvements to the **MaintTech** documentation or software.

Technical Support

Contact Details

For any problem regarding this application, feel free to contact our support team at: mainttech@live.se

To know more about us, visit the following website: <http://www.mainttech.se/>