

# CXBALANCER

## Enhanced Frequency Response Mode

### 1 INTRODUCTION

This mode, named (Automatically) *Coast Down* is added from CXB Ver.1.52 and CXM Ver 1.42.

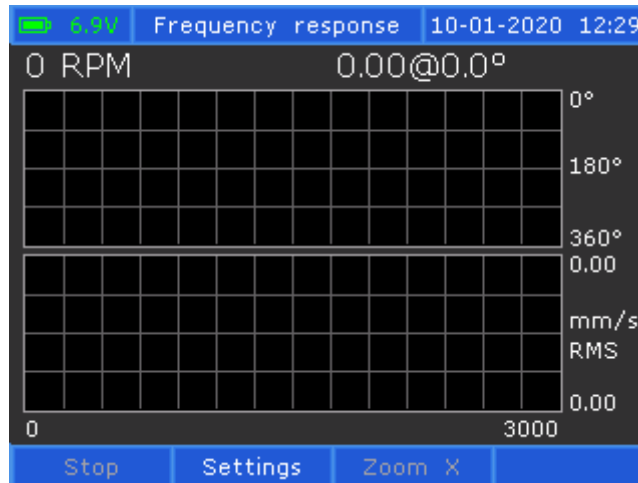
In *Normal* mode, each *Amplitude & Phase measurement* needs to be explicitly saved.

In *Coast Down* mode, the measurements are saved automatically with a minimum of 30 RPM decrement.

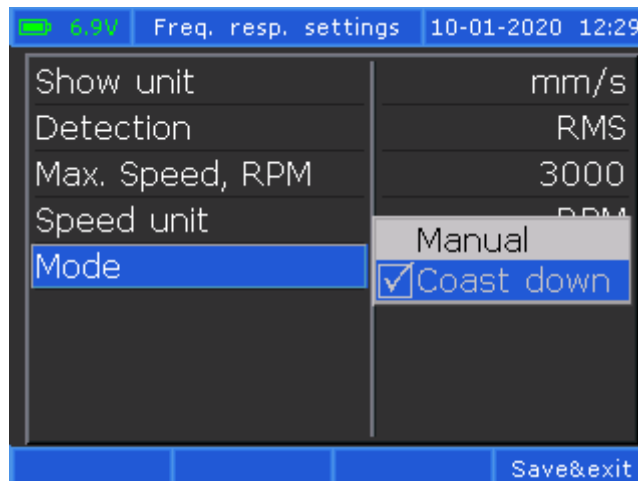
This document explains briefly how to use this new mode.

### 2 PROCEDURE

- From *Main* menu select *Frequency Response*, to access the menu.
- Press F2 (*Settings*)

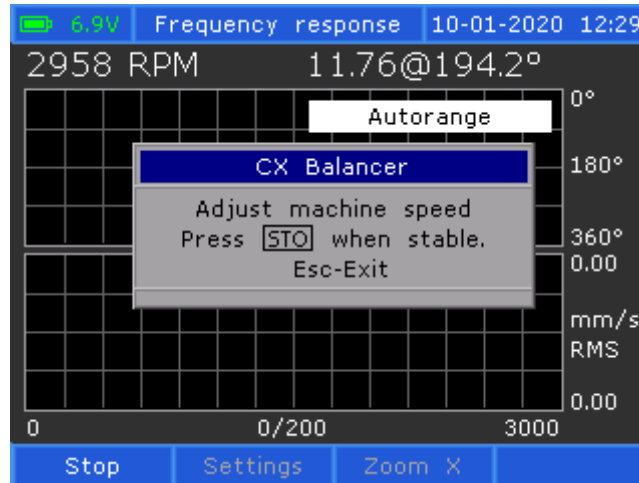


- Select *Mode* and change to *Coast Down*.



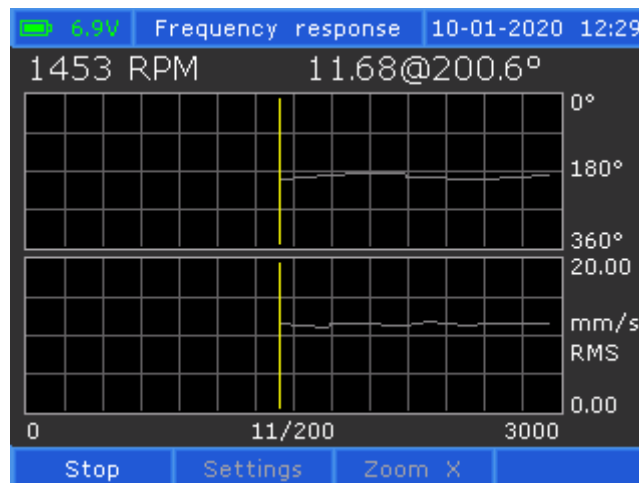
- Press F4 (*Save & Exit*).
- Press the *ENTER* key to start the measuring cycle.
- Start the machine or adjust the initial rotational speed.

Actual speed will be live updated onto the display in the left corner.



Wait until the measurement is stable (the *Autoranging* label must disappear).

- Press *Store* key and collecting cycle will begin.
- Now stop the machine.



The plot cursor will slide down once the machine speed decrease.

Using F1 (*Stop*), you can stop the measurement points collection, whenever you want.

Normally, this can be done when the machine has a very low speed (below 4÷5 Hz).

The plot becomes visible and you may use the arrow key to move the cursor into the plot, to visualize the collected measurements.

- Finally, use *Menu* key and save the plot into a file.  
This also can be downloaded in *CXSpectra* application.
- Press *ESC* key to return to *Main* menu.

### ***Documentation Feedback***

---

Any suggestions and comments for improving this Application Notes should be e-mailed at [mainttech@live.se](mailto:mainttech@live.se)

**MaintTech Sweden** uses feedback for continuous improvement of our documentation and for future **MaintTech** products. We request comments be specific and include the product name and version. We cannot provide personal responses to every message received, but please be assured that all feedback will be given careful consideration for future improvements to the **MaintTech** documentation or software.

### ***Technical Support***

---

### ***Contact Details***

For any problem regarding this application, feel free to contact our support team at: [mainttech@live.se](mailto:mainttech@live.se)

To know more about us, visit the following website: <http://www.mainttech.se/>