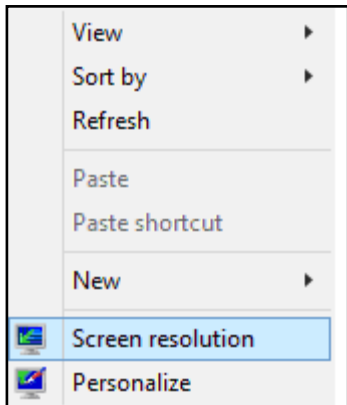


TABLET CONFIGURATION

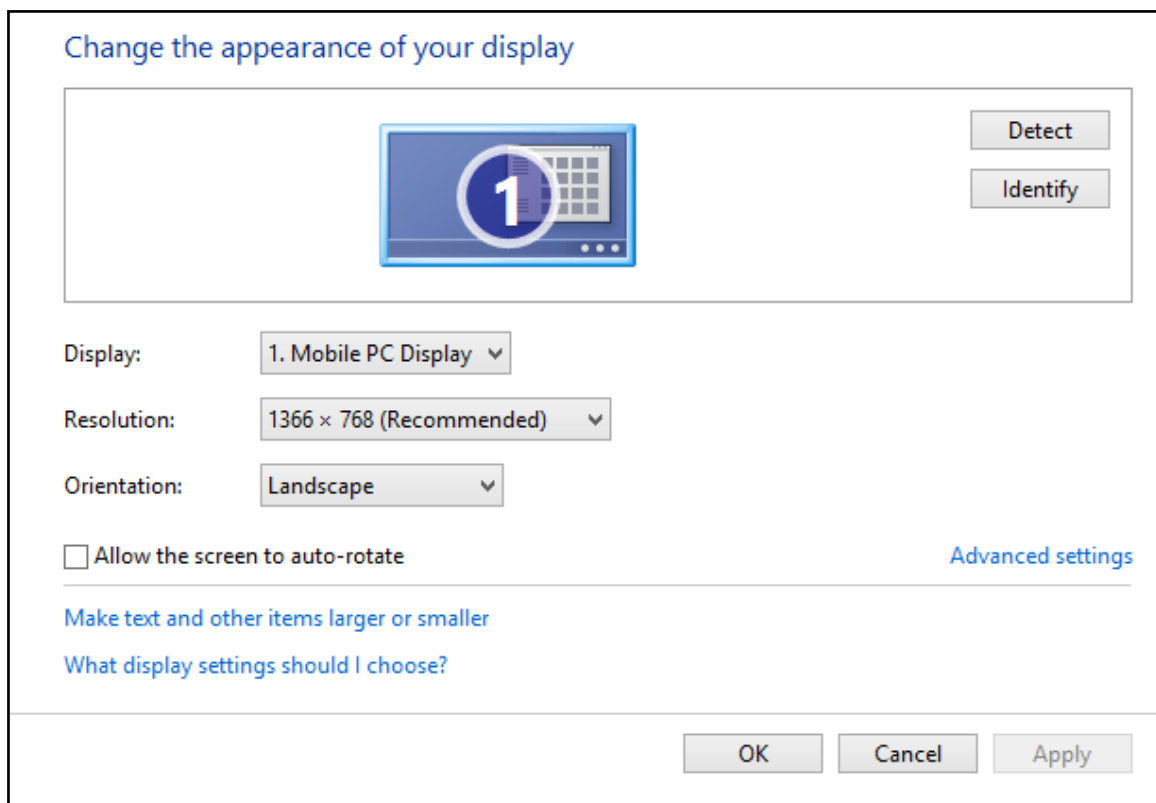
1 Introduction

These are mandatory settings for a tablet.

Click-right on desktop.



From the menu, select "Screen resolution".



Uncheck "Allow the screen to auto-rotate".

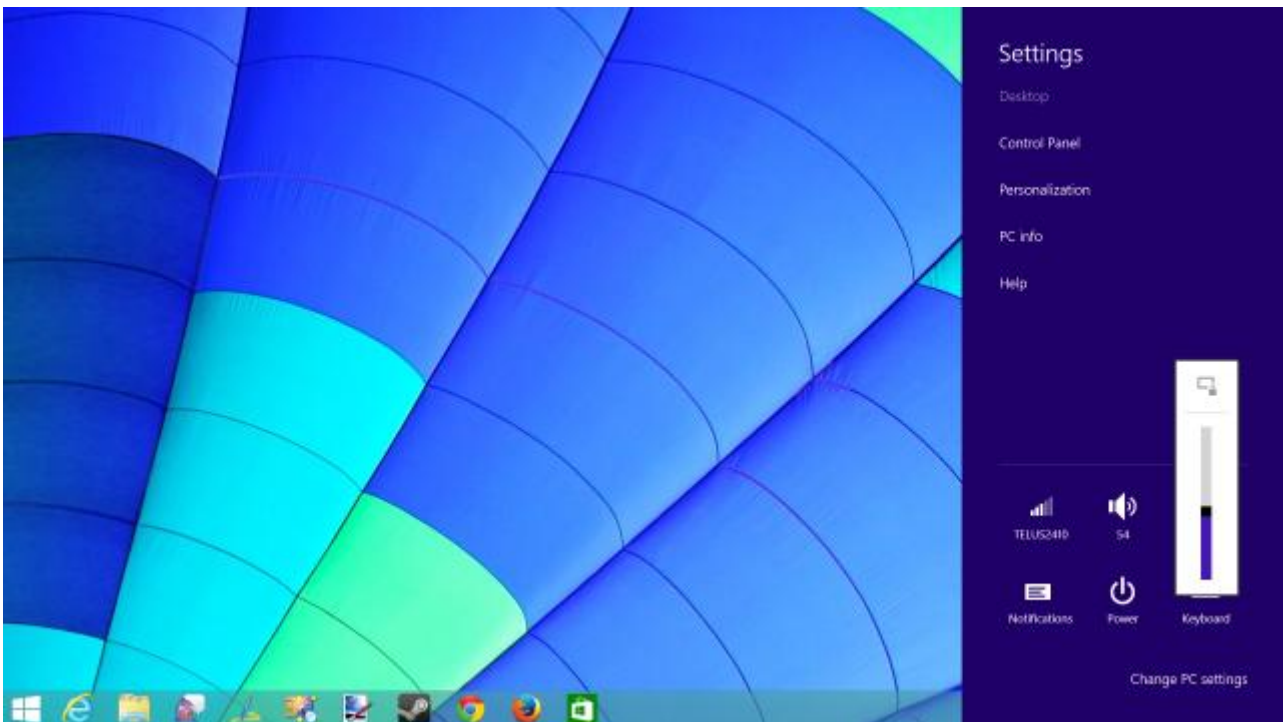
Press "Apply" and "OK".

2 Prolong your Windows 8 tablet's battery life

2.1 Adjust display brightness

Your screens backlight uses quite a bit of power. Reducing your display brightness will save that power. Windows 8.1 uses automatic brightness on devices with brightness sensors, but you can also adjust the brightness setting yourself.

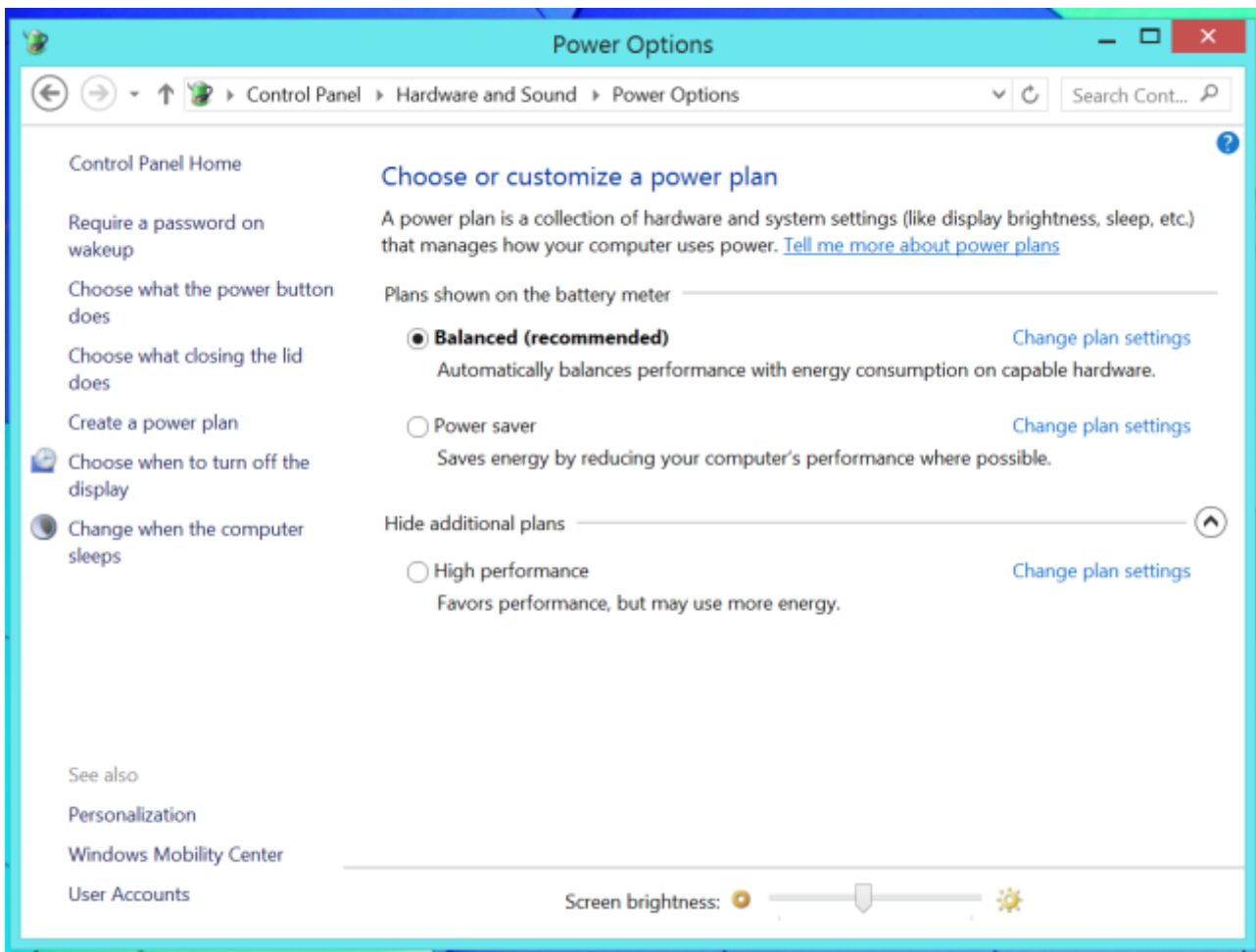
To access the brightness slider, open the charms bar and select the *Settings* charm. Tap or click the *Screen* icon and adjust the brightness slider.



2.2 Choose a power plan

Windows 8.1 still has standard Windows power plans, which are basically just groups of settings you can change all at once. For example, the default power plan is *Balanced*, but you can select *Power Saver* to save some power. In most cases, you'll want to stick with the default *Balanced* setting. Power plans also expose additional options to you, so you can dig into this dialog and adjust a variety of power settings to control how your power-saving settings work. We don't necessarily recommend changing the more advanced settings unless you know what you're doing.

To modify power plans, open the desktop *Control Panel* by pressing *Windows Key + X* and clicking *Control Panel*. Navigate to *Hardware and Sound > Power Options* and select your power plan.

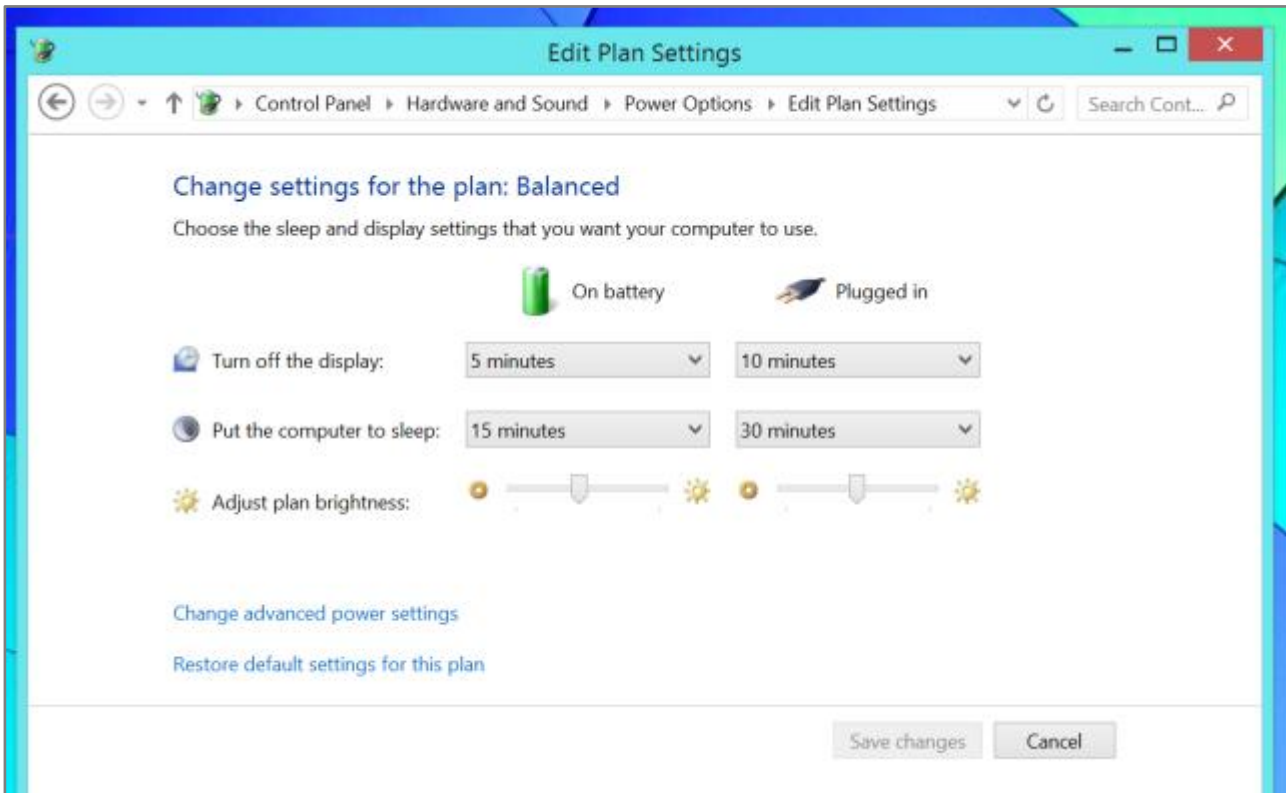


2.3 Adjust display and computer sleep times

While you probably don't want to get too deep into the power plan options, you may want to adjust the "turn off the display" and "put the computer to sleep" times. Click the *Change plan settings* links in the *Power Options* screen to access these settings.

You can control what happens when you step away from your computer or set it aside and stop using it from here. To save battery power, you'll want the computer's display to turn off as quickly as possible and to put the computer to sleep as quickly as possible. With the display off — and especially with the computer asleep — you're using less power.

Of course, everything you adjust here is a trade-off. If you set the times too low, the computer will turn off its display and sleep while you're still using it. You can also save power by putting your device to sleep when you're done using it instead of waiting for it to time out and go to sleep on its own.



2.4 Unplug devices

Devices you have plugged into your computer use power. For example, if you have a USB mouse plugged into your computer, that USB mouse is drawing power through your computer's USB port so it can run. It's not a huge amount of power and you shouldn't fret if you're actually using the mouse, but you'll want to unplug devices you're not using if you really want to save power.

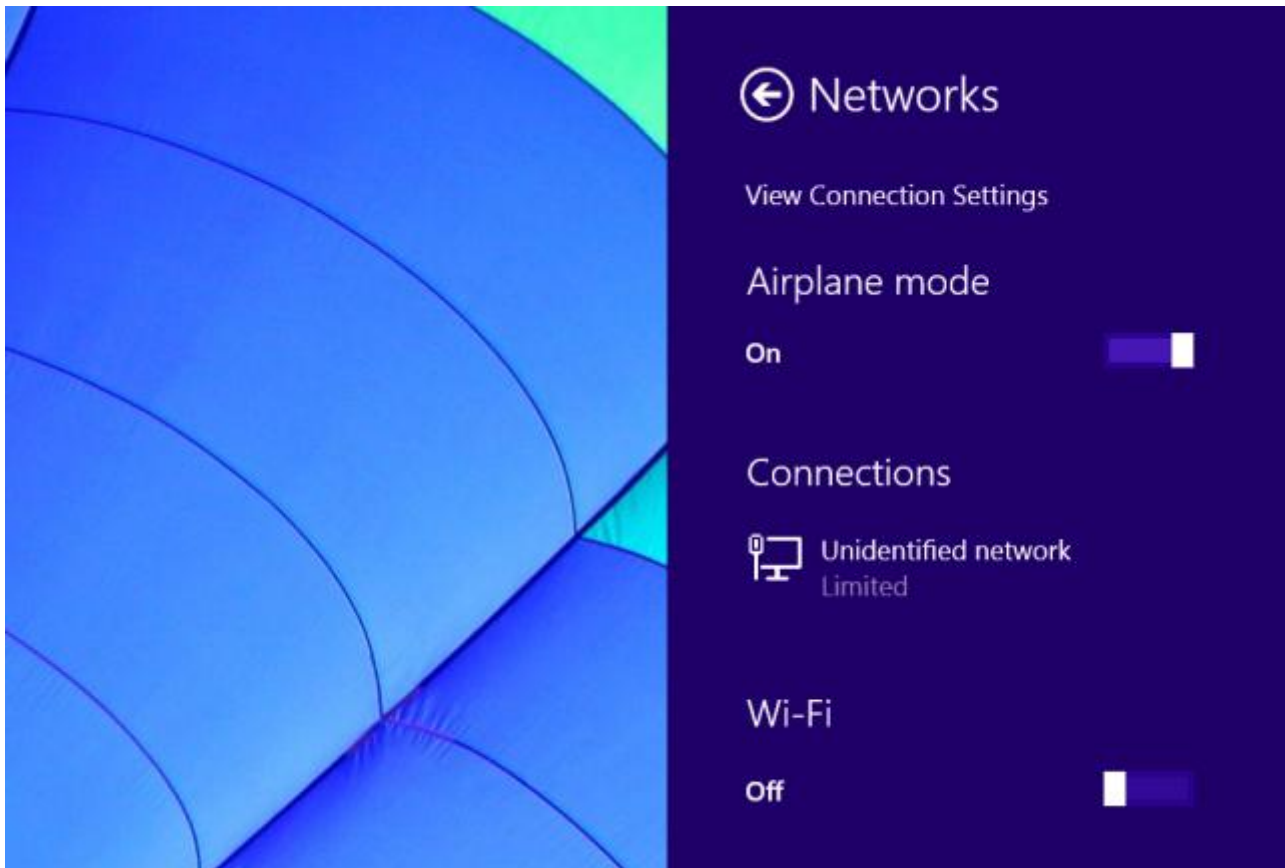
Some USB devices use more power than others do, of course. A tiny USB stick won't use as much power as a mechanical external hard drive, for example.



2.5 Disable WI-FI

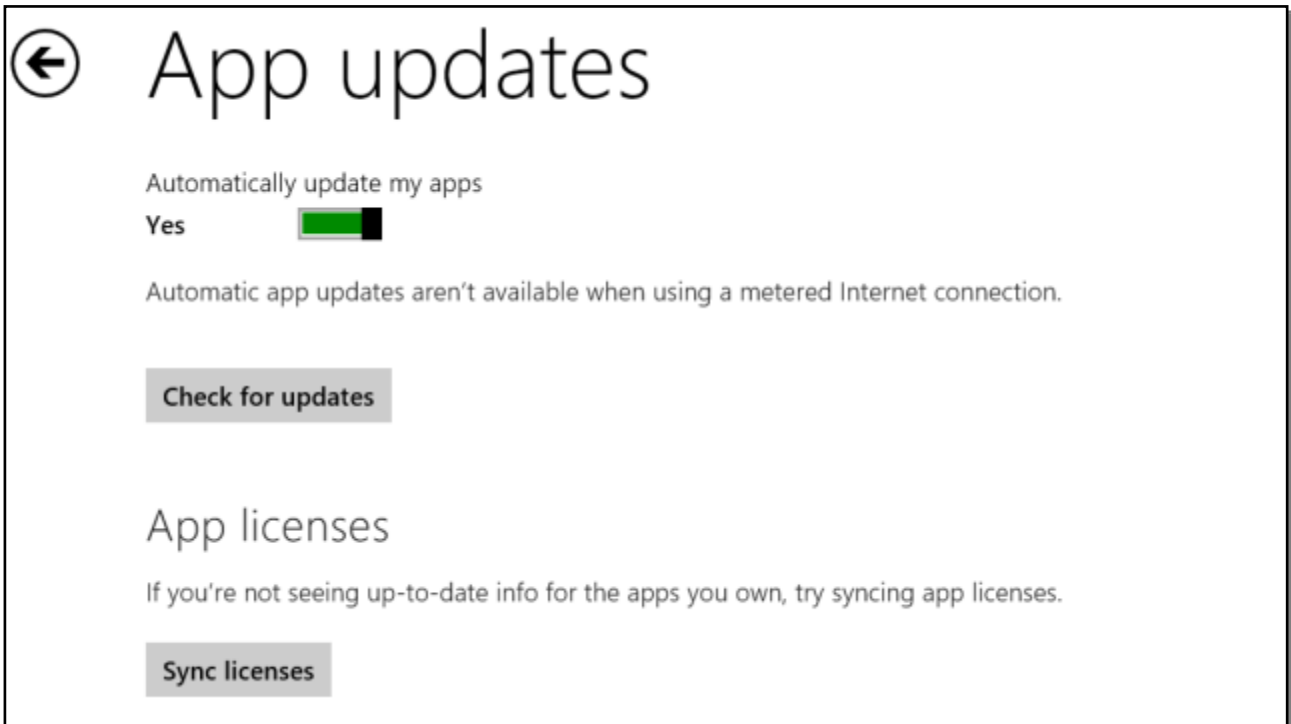
If you don't need network access, this is an easy way to squeeze some more battery life out of your device by disabling the wireless features.

To disable WI-FI, click the wireless icon in your desktop system tray and toggle the Wi-Fi slider. You can also open the charms bar, tap *Settings*, and tap the *Wi-Fi* icon to access this menu.



2.6 Disable automatic App updates

If you'd prefer updating apps manually, you can prevent Windows from updating "Store apps" automatically. To do so, open the *Windows Store app*, swipe in from the right or press *Windows Key + C*, and navigate to *Settings > App updates*. This won't save much battery power, but it will allow you to update apps when you choose to update them.



Documentation Feedback

Any suggestions and comments for improving this Application Notes should be e-mailed at mainttech@live.se

MaintTech Sweden uses feedback for continuous improvement of our documentation and for future **MaintTech** products. We request comments be specific and include the product name and version. We cannot provide personal responses to every message received, but please be assured that all feedback will be given careful consideration for future improvements to the **MaintTech** documentation or software.

Technical Support

Contact Details

For any problem regarding this application, feel free to contact our support team at: mainttech@live.se

To know more about us, visit the following website: <http://www.mainttech.se/>